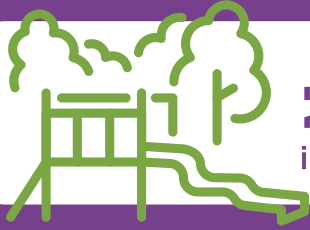


Stevenage in numbers...



£1.5 million

investment in Play Areas during 2018

4



for Town Centre Gardens, Fairlands Valley, Hampson and Shephalbury park

550



new council developed homes by 2025

7,600

new properties in Stevenage by 2030



87,700

population of Stevenage

42km

of Cycle Track



30,000

people attended

Stevenage**DAY**
2019



£1Bn
regeneration budget

1
4

satellites in orbit were built in Stevenage

4,665 tonnes

of waste recycled in 2018/2019, saving the council

£1,064,558



206,239

people served at our Customer Service Centre in 2018/2019



Stevenage
BOROUGH COUNCIL

Source for all figures: Stevenage Borough Council